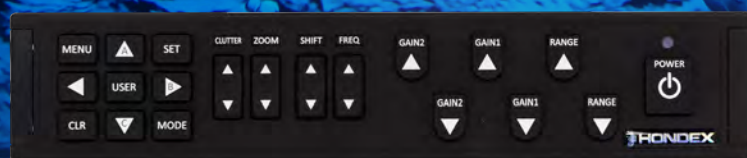
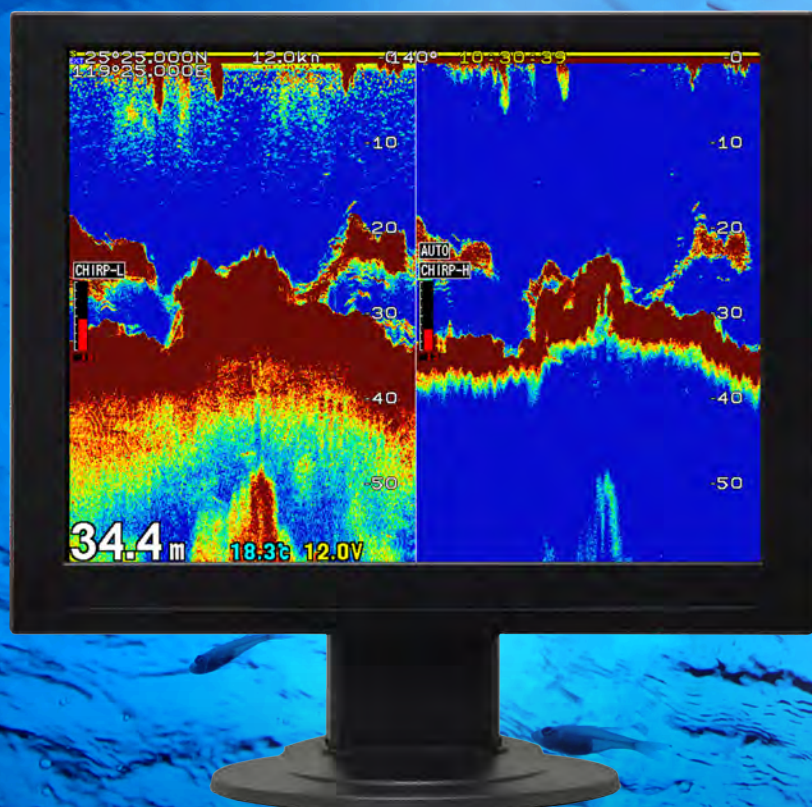


HONDEX[®]

Black-Box Style Chirp Echo Sounder
HE-2910B

New Standard for Commercial Fishing

Chirp Enabled System



Black-Box Style Echo Sounder

HE-2910B

Chirp Model



HE-2910B

Specifications

Operating Voltage	DC11-30V
Power Consumption	Approx. 20W
Dimension	W385 x D235 x H70
Weight	Approx. 2.4kg
Display Style	Landscape
Number of pixel	800 × 600

Echo Sounder

Frequency	Chirp: 38-70kHz, 130-220kHz Traditional: 50/200kHz etc.
Output Power	1 to 5kW
Background	4 colors
Color Configuration	5 patterns

Chirp Frequency

High-Chirp	130-220kHz
Low-Chirp	38-70kHz

*when using Chirp Transducers
*TD390:Dedicated Low-Chirp Transducer

In the Box

- HE-2910B Main Unit
- Power Cable: DC07
- Remote: CR08



Main Unit



DC07



CR08

Options

- Water Temp(Thru-Hull) Kit: TC02CS(15m), TCK01
- Water Temp(Transom): TC03-05/10 (5m/10m)



TC02CS



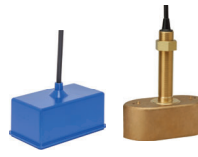
TCK01



TC03-05/10

Compatible Transducer

Chirp



TD340 / TD340T
(1kW 38-70kHz, 1kW 130-220kHz)



TD361
(2kW 38-70kHz, 1kW 130-220kHz)



TD380
(3kW 38-70kHz, 1kW 130-220kHz)



TD390
(5kW 38-70kHz)

Traditional



TD47T
(1kW/50&200kHz)



TD67T
(1.8kW 50kHz, 1kW 200kHz)



TD68
(2kW 50kHz, 1kW 200kHz)



TD86
(3kW 50kHz, 1kW 200kHz)



TD88
(3kW 28kHz)

Specifications are subject to change without notice.

Dealer



HONDA ELECTRONICS CO., LTD.

20 Oyamazuka, Oiwa-cho,
Toyohashi, Aichi 441-3193, Japan

<https://en.honda-el.co.jp/product/marine>



HONDEX is the registered trademark of HONDA ELECTRONICS CO.,LTD. in the United States, Japan and other countries.