

DIAGNOSTIC SCANNER Linear Ultrasonic System HS-103V

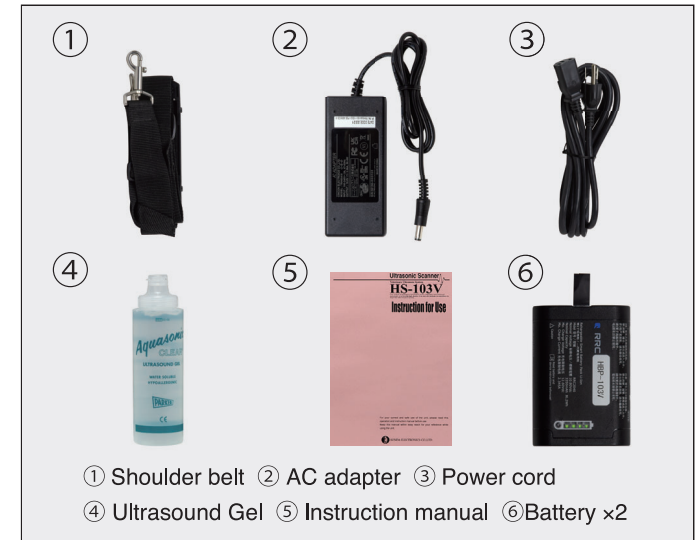
DIMENSIONS



SPECIFICATIONS

Channel	96 channels
Display Monitor	6.5 inch (640 x 480 VGA)
Display Mode	B-mode
Doppler	CFM (Color Flow Mapping), PD (Power Doppler)
Range	HCS-236M : 2 cm ~ 24 cm (1 cm step) HLV-275M : 2 cm ~ 16 cm (1 cm step)
Ultrasound Frequency Rate	3.5 to 10.0 MHz
Acoustic Power	20 to 100% (10% step)
Image Adjustment	B-Gain : 36 to 100 dB (1 dB step) B Dynamic Range : 35 to 95 dB (1 dB step) Doppler-gain : 35 to 100 (5 step) Doppler Speed Range : 1/2, 1, 2, 4, 8, 16 γcorrection : 2 types H-res : OFF, Detail1, Detail2, (Image Enhancement) Detail3, Mild, Resolution Penetration, Clarity, Boundary, Anatomy Soft : Off, 1 ~ 4 levels Edge : Off, 1 ~ 3 levels
Measurement Function	Distance, Circumference, Histogram, Cattle Pregnancy weeks (CRL)
Data Storage	Still Image (JPEG) : Internal 200 image max Movie Image(AVI) : Internal 10 image max
External I/O	DVI port, USB port
IPX	IPX1
Power Source	DC 10.8 V
Dimension	184 mm(W) x 260 mm(H) x 60 mm(D)
Net Weight	1.8 kg (Including Probe, Battery and Shoulder belt)
Probes	Convex Probe (5.0 / 3.5 / 2.8 MHz 60R) HCS-236M Linear Probe (Rectal) 10.0 / 7.5 / 5.0 MHz 50 mm HLV-275M

ACCESSORIES



OPTIONS



6.5 inch

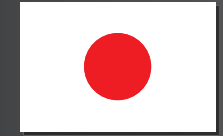


**LCD Brightness
1000 cd/m²**

Attention
 •Contents of this catalog are as of February 14, 2024
 •The specification and appearance are subject to change without notice for improvement.
 •Actual colors of products and colors of this catalog may a little different cause of printing.

HONDA ELECTRONICS CO., LTD.
 Medical Division
 20 Oyamazuka, Oiwa-cho, Toyohashi
 Aichi 441-3193, Japan
 TEL: +81-532-41-2514 FAX: +81-532-41-4441
 en.honda-el.co.jp/

Registered company for ISO9001/ISO13485/ISO14001 **CE**
 is the trademark of HONDA ELECTRONICS CO., LTD.
 This catalog is printed by vegetable ink on recycle paper.



MADE IN JAPAN



Ultrasound Imaging Device for Veterinary Use

HS-103V

Features

1. Multi frequency / High Density (HD) Probe
2. Battery powered
3. Doppler functions
4. Cine-loop functions
5. Measurement functions



Multi frequency / High Density (HD) probe

Unique probe developed by Honda Research Team. Three frequencies can be independently selected according to the depth of the diagnosis site.



Probe : HLV-275M
Frequency : 10.0 / 7.5 / 5.0 MHz
Width : 50 mm
Length of cable : 1.8 m

Probe : HCS-236M
Frequency : 5.0 / 3.5 / 2.8 MHz
Radius : 60 R
Length of cable: 1.2 m

* It is scheduled to launch in March 2024
* Specified probe is hardwired to units. (no probe connector)

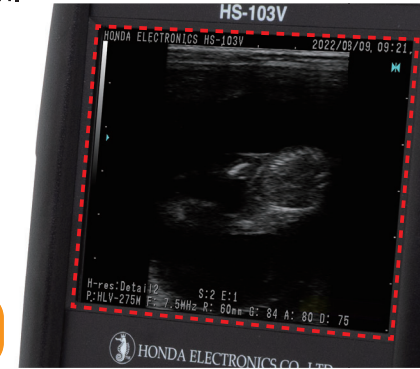


1 LCD Screen Bonding Technology



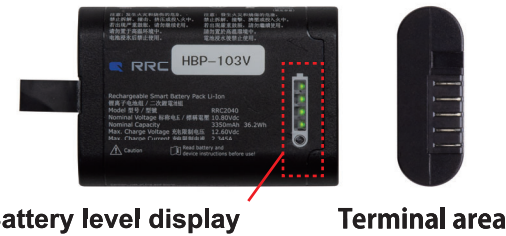
Enhanced image brightness and LCD Screen Bonding improve visibility and prevent screen condensation.

LCD Brightness
1000 cd/m²



2 Battery powered

Battery provides approximately 3 hours of continuous operation. An LED confirms the remaining battery charge level.



Battery level display

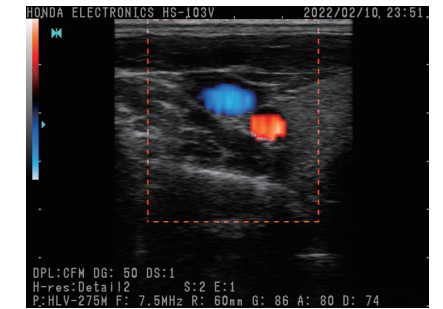
Terminal area



Connect the AC adapter to the main unit to charge the battery.

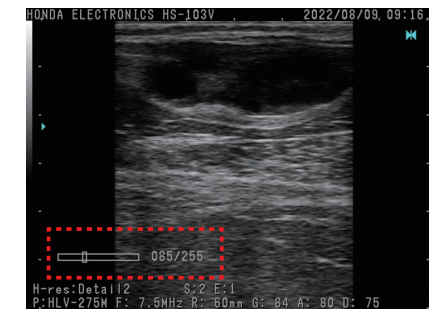
3 Doppler functions

Color Flow Mapping (CFM) and Power Doppler (PD) functions allow observation of blood flow around the corpus luteum (CL) as well as other patient anatomical organs.



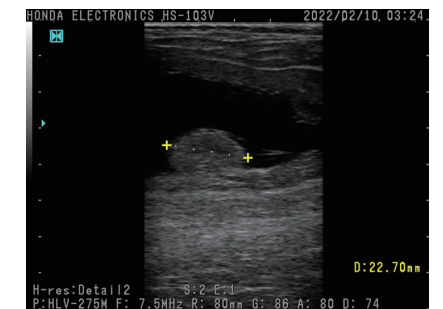
4 Cine-loop functions

Up to 255 frames can be played back. Images can be saved according to the optimum frames.



5 Measurement functions

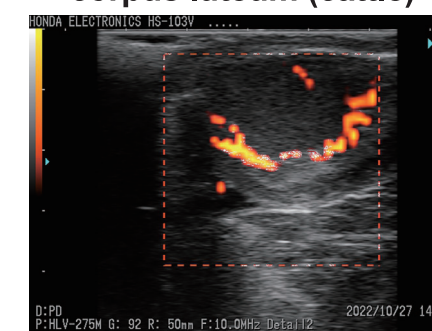
The size of the fetus and corpus luteum can be measured.



Pregnancy image (cattle)



Blood flow image for corpus luteum (cattle)



Pregnancy image (sow) 20 days

